

Plant
Guide



Shade Gardening *made easy*

*Make shade loving plants
a feature of your garden*



www.haskins.co.uk



HASKINS
for garden pleasure

Dealing with the shade cast from trees or buildings is an inevitable part of gardening. Here's our plant list to take on these conditions.

Trees

- **Acer platanoides**
- **Amelanchier lamarkii**
- **Cornus contraversa** – partial shade
- **Cornus kousa**
- **Corylus avellana** (Hazel)
– green leaved types
- **Hamamelis** (Witch hazel)
- **Taxus** (Yew)
- **Ilex** (Holly)

Shrubs

- **Aucuba** (Spotted laurel)
- **Azalea** †
- **Berberis** – green leaved types
- **Buxus sempervirens** (Box)
- **Camellia** †
- **Chimonanthus** (Wintersweet)
– light shade only
- **Corylopsis**
- **Cotoneaster** – evergreen varieties
- **Crinodendron hookerianum** †
- **Daphne odora** – partial shade
- **Elaeagnus** – evergreen types
- **Enkianthus** – partial shade
- **Euonymus**
- **Fatsia japonica** (False castor oil plant)
- **Fothergilla major**
- **Garrya elliptica**
- **Gaultheria** (Pernettya) †
- **Hedera helix** (Ivy)
- **Hypericum androsaemum**
- **Hypericum calycinum**
- **Hypericum x moserianum**
- **Juniperus squamata** – greener forms
- **Leycesteria formosa**
(Himalayan honeysuckle)
- **Leucothoe fontanesiana**
- **Ligustrum** (Privet)
- **Lonicera nitida** (Shrub honeysuckle)
- **Lonicera x purpusii**
- **Lonicera pileata**
- **Mahonia**
- **Osmanthus**
- **Pachysandra terminalis**



Hamamelis
(Witch hazel)



Clematis armandii
(Apple blossom)

- **Philadelphus** (Mock orange)
– partial shade
- **Photinia** (Red Robin)
- **Pieris** †
- **Pittosporum**
- **Prunus laurocerasus** (Cherry laurel)
- **Prunus lusitanica** (Portuguese laurel)
- **Rhododendron** †
- **Ribes laurifolium** (Flowering currant)
- **Ruscus** (Butchers broom)
- **Sambucus** (Elderberry)
- **Sarcococca** (Christmas box)
- **Skimmia** †
- **Vaccinium** †
- **Viburnum**
- **Vinca** (Periwinkle)
- **Weigela**

Climbers & Wall Shrubs

- **Akebia quinata** – partial shade only
- **Berberidopsis corallina** †
– partial shade
- **Clematis armandii** – partial shade
- **Clematis montana** – partial shade
- **Cotoneaster horizontalis**
- **Euonymus fortunei**
- **Garrya elliptica**
- **Hedera helix** (Ivy)
- **Hydrangea petiolaris** (Climbing hydrangea)
- **Hydrangea seemanii**
- **Lonicera japonica**
- **Lonicera periclymen** (Honeysuckle)
- **Parthenocissus** (Virginia creeper/Boston ivy)
- **Pyracantha**
- **Schizophragma hydrangeoides**

Grasses

- **Carex**
- **Deschampsia**
- **Hakonechloa**
- **Luzula**
- **Molinia**



Viburnum

Plants marked with † require acidic/lime free soil.

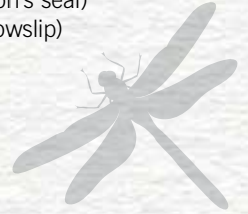


Herbaceous Perennials & Annuals



- **Aconitum** (Monkshood)
- **Actaea** (Cimicifuga)
- **Ajuga reptans** (Bugle)
- **Alchemilla mollis** (Ladys mantle)
- **Anemone japonica**
- **Anemone blanda**
- **Angelica gigas**
- **Aquilegia**
- **Astilbe**
- **Astrantia**
- **Begonia**
- **Bergenia cordifolia** (Elephants ears)
- **Brunnera** (Bugsbane)
- **Campanula**
- **Cimicifuga**
- **Collinsia**
- **Convallaria majoralis** (Lily of the valley)
- **Corydalis flexuosa**
- **Cyclamen**
- **Dicentra spectabilis** (Bleeding heart)
- **Digitalis** (Foxglove)
- **Doronicum cordatum**
- **Epimedium**
- **Euphorbia amygdaloides**
- **Geranium** – hardy groundcover forms
- **Hardy Ferns**
- **Helleborus** (Christmas rose)
- **Hepatica**
- **Heuchera**
- **Heucherella**
- **Hosta**
- **Houttuynia cordata**
- **Impatiens** (Busy lizzie)
- **Lamium** (Dead nettle)
- **Lobelia**
- **Meconopsis** (Himalayan poppy) †
- **Mellitis Royal Velvet**
- **Myosotis** (Forget-me-not)

- **Oxalis**
- **Paeonia** (Peony)
- **Phlox**
- **Polygonatum** (Solomon's seal)
- **Primula** (Primrose, Cowslip)
- **Pulmonaria**
- **Rogersia**
- **Saxifraga**
- **Thalictrum** (Rue)
- **Tiarella**
- **Veronica**
- **Viola**



Did you know?

Shade loving plants are ideal for courtyard gardens

Plants marked with † require acidic/lime free soil.

For more gardening and plant advice visit our website www.haskins.co.uk



www.haskins.co.uk